

# CURRENT CONCEPT PLAN

## OVERALL

**Municipal offices:** 7,500sf

**Community Center Building:** 15,000 sf  
(kitchen, gym, storage, restrooms/lockers, etc.)

**Townhomes :** 40 total  
(25'x125' lot with 2 car rear loaded garages and 2 car rear driveways off alley)

**Apartments:** 138  
(located in 5 buildings, 3 stories each)

**Commercial space:** 5,832sf total  
(Located on lower level of 3 apartment buildings)

**Parking:** 628 total,  
(153 on-street, 275 lots, 200 townhomes )



# OPEN SPACE & TRAILS

OVERALL: 9.4 ACRES (27.97%)\*

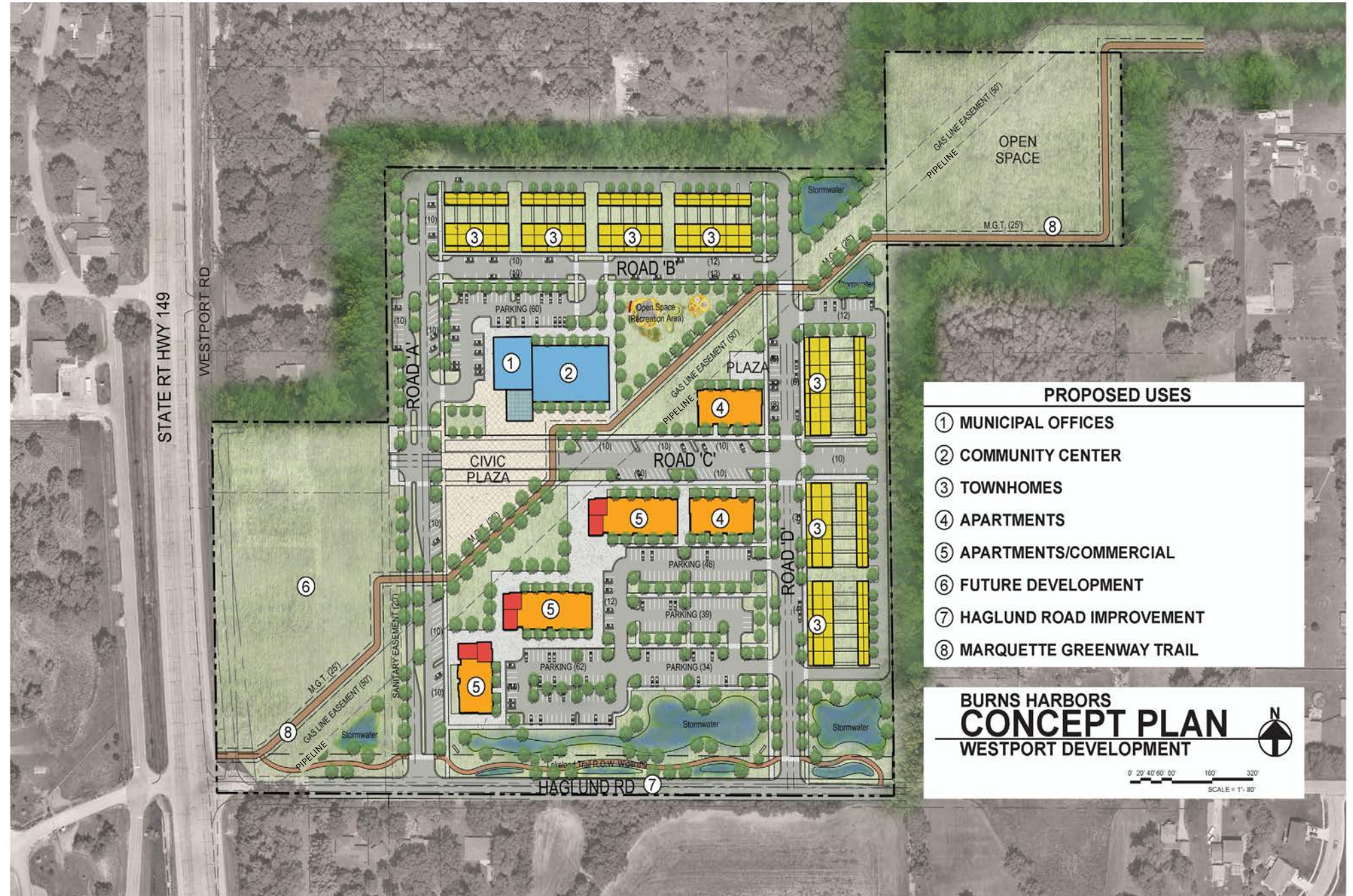
**LAKELAND TRAIL:** 1.80 acres (5.32%)

**OPEN SPACE:** 3.50 acres (10.38%)

**GASLINE:** 1.74 acres (5.16%)

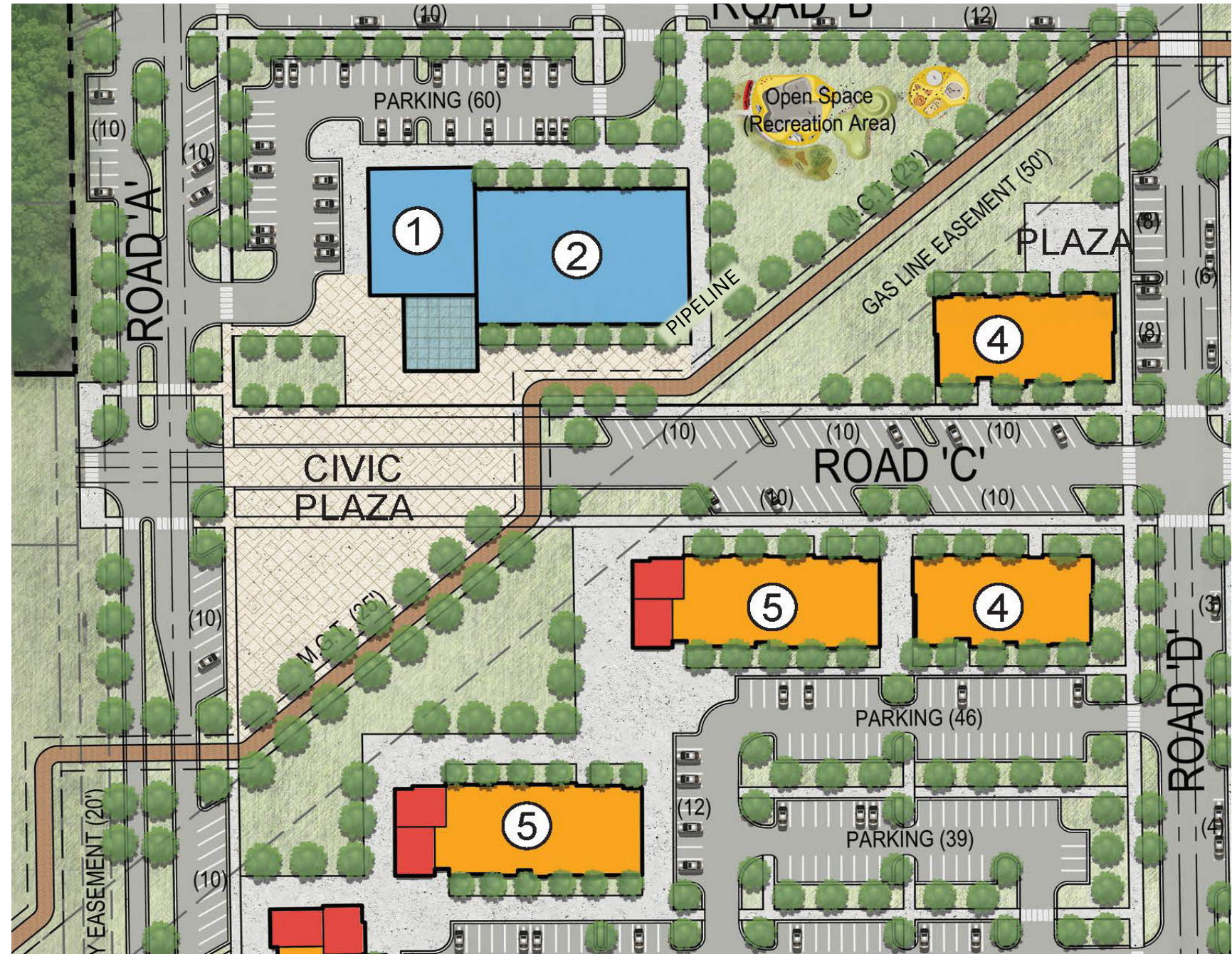
**STORMWATER:** 2.40 acres (7.11%)

\***Marquette Greenway Trail:** 1.46 acres  
(not included as it is an easement on Lots)



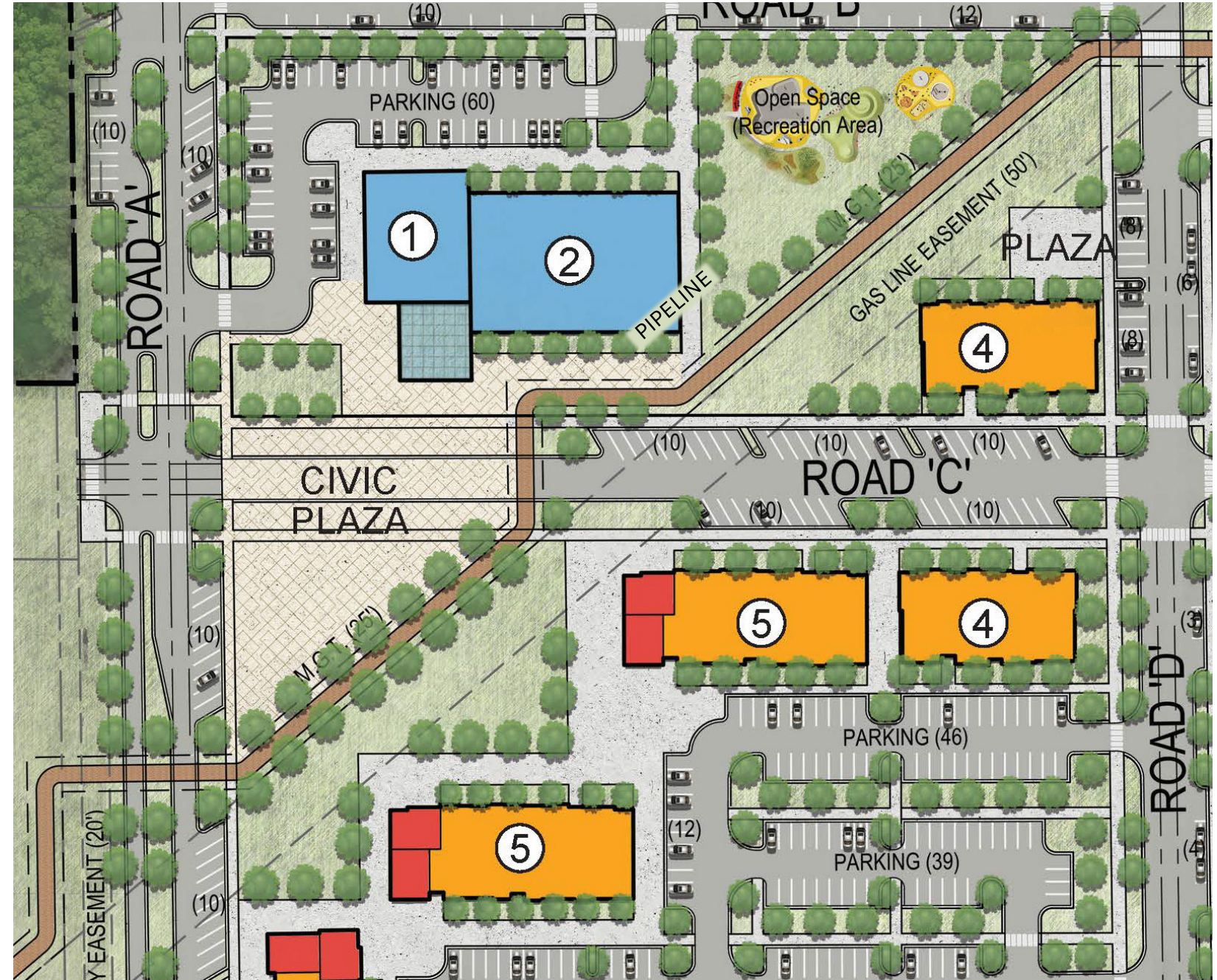
# PLAN-ENLARGEMENT

## CIVIC PLAZA



# PLAN-ENLARGEMENT

## APARTMENTS/COMMERCIAL



# PLAN-ENLARGEMENT

## EAST SINGLE-FAMILY TOWNHOMES



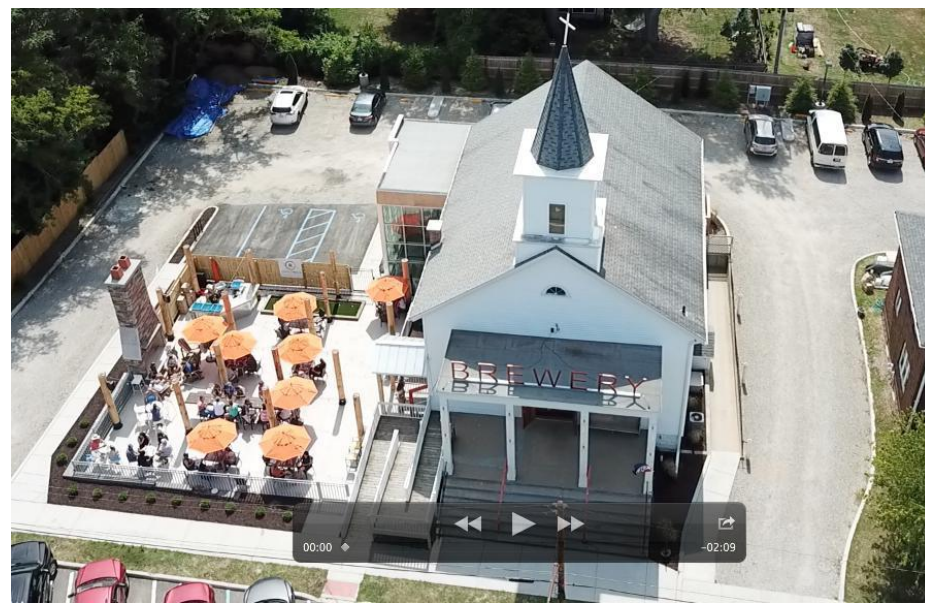
# PLAN-ENLARGEMENT

## NORTH SINGLE-FAMILY TOWNHOMES



# PLAN-ENLARGEMENT

## FUTURE WEST DEVELOPMENT PARCEL



# WESTPORT CENTER RENDERING





# WESTPORT CENTER RENDERING



# WESTPORT CENTER RENDERING



# WESTPORT CENTER RENDERING



# WESTPORT CENTER RENDERING



# WESTPORT CENTER RENDERING

